



ADELAIDE: UNILODGE CITY GARDENS

Located in the heart of Adelaide's city centre, UniLodge City Gardens is the ideal place to experience Adelaide at its fullest. Close to major universities and tertiary institutions, we are just 15 minutes' walk to Rundle Mall, where you may explore a wide range of retail shops, supermarkets and dining options.

Our building features Australia's largest green wall at 15 stories high, bringing you closer to nature with the lush greenery. Public spaces include a gym, cinema room, BBQ pits and more. A large outdoor courtyard provides an open space for residents to enjoy the warm sun with friends.

Stay with friends or meet new friends at UniLodge City Gardens. Be part of our vibrant community today.

WHAT'S NEARBY?

University of South Australia:
5 minutes walk

TAFE SA:
8 minutes walk

University of Adelaide:
15 minutes by bus

Flinders University (Victoria Square):
15 minutes walk

Chinatown:
15 minutes walk

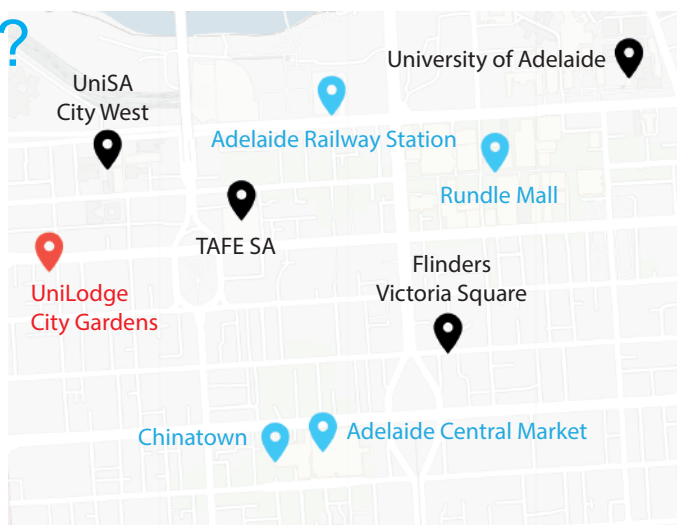
Adelaide Central Market:
15 minutes walk

Rundle Mall:
20 minutes walk

Adelaide Railway Station:
15 minutes walk

Adelaide Airport:
Less than 30 minutes by bus

Harbour Town Adelaide:
30 minutes by bus



PROPERTY FEATURES



Secure card access



Study room



24/7 gym



Laundry room



BBQ pit



Communal kitchen



Outdoor courtyard

APARTMENT FEATURES



Refrigerator



Shower



Air-conditioning



Heating



BRAND NEW STUDENT ACCOMMODATION IN THE CITY!



@unilodgecitygardens



ericwang@weehur.com.sg



+86 189 3995 7686



105 Gray Street, Adelaide SA 5000





ADELAIDE: UNILODGE CITY GARDENS

Different Room Types Available



Studio Apartment



Studio Apartment (Queen Bed)



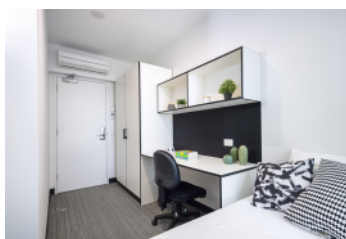
Studio Premium Apartment



Studio Accessible Apartment



2-Bedroom Apartment






6-Bedroom Apartment



BOOK NOW

INCLUSIONS

-  Free Unlimited Wi-Fi
-  Free Water and electricity
-  Student events

BOOK NOW TO EXPERIENCE YOUR LIFE IN THE CITY!



@unilodgecitygardens



ericwang@weehur.com.sg



+86 189 3995 7686



105 Gray Street, Adelaide SA 5000

